



Piezoelctric Feeder

Specification



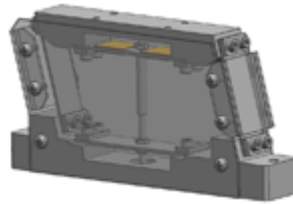
Piezoelectric Pump R&D Center
Changzhou KIPPON Electronics Technology Co. Ltd

04/06/2011





Product name : Piezo Linear feeder



Linear feeder

Number	Type	[mm] Max chute length	[mm] Max chute width	[kg] Chute weight	Note
1	PL32	220	22	0.3	
2	PL40	300	30	1.2	
3	PL50	500	40	3.0	

Product introduction :

piezoelectric feeder i.e vibrator bowl feeder is one of our another products .It greatly promote the productivity in the machining firms and assembling lines .PIEZO FEEDER is employing piezo-electric element made of fine ceramics to it's driving unit which is super in it's quick speed of feeding ,durability and adaptability to different size shape and material of parts.It can be operated in different fields suck as specialised automation engineering, providing automatic parts handling equipment for full load production in semiconductor chip, pharmaceutical, electronic components, molded plastic, automotive and metal working industries - anywhere, where there is a need to automate the handling and orientation of component parts.



Features- (Piezoelectric feeder) :

Ø It is not necessary to adjust the spring. It is not necessary to adjust the resonance spring after assembly and switch the frequency between 50Hz and 60Hz according to the region of use. Many years of trouble-free operation can be ensured by simply setting the controller frequency.

Ø No magnetic effect on workpiece. There is no magnetic effect on small or magnetic workpieces from the feeder and trouble-free tooling is ensured. .

Ø Suitable for processing thin, small workpieces A directly driven spring with a higher oscillation factor permits the feeding of small and thin items without any jiggling.

Ø A significant energy-saving effect. Piezo Feeder allows a 70% or more reduction in power consumption than electromagnetic feeders.

Ø 5. Can be used with 100/200V power sources. The use of a dedicated controller allows operation with either 100 or 200V power sources. Our products guarantee a consistent and accurate. our products guarantee a consistent and accurate flow of components into your production line and ensure low maintenance all the time.

